



INDOFINE Chemical Company, Inc.

121 Stryker Lane, Bldg. 30, Suite 1 • Hillsborough, NJ 08844 • U.S.A.

Phone: (908) 359-6778 • FAX: (908) 359-1179

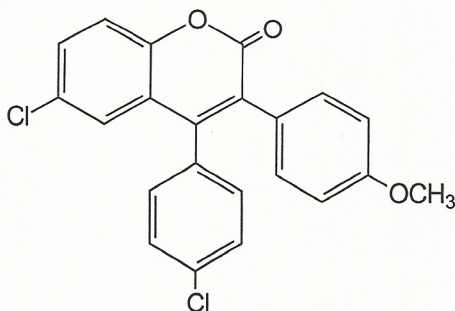
website: www.indofinechemical.com

e-mail: chemical@indofinechemical.com

CERTIFICATE OF ANALYSIS

CAT. No.: 19-057

<u>Product Name:</u>	6-CHLORO-4(4'-CHLOROPHENYL)-3(4'-METHOXYPHENYL)COUMARIN
<u>Lot Number:</u>	99002
<u>Chemical Formula:</u>	C ₂₂ H ₁₄ Cl ₂ O ₃
<u>Molecular Weight:</u>	397.26
<u>Melting Point:</u>	176-178°C
<u>Appearance:</u>	Light yellow crystalline powder
<u>Solubility:</u>	Soluble in Chloroform
<u>TLC:</u>	Hexane: Ethyl acetate (8:2)
<u>Storage:</u>	Store in cool, dry place
<u>NMR Spectrum:</u>	Enclosed
<u>Purity (HPLC):</u>	99.26%





INDOFINE Chemical Company, Inc.

121 Stryker Lane, Bldg. 30, Suite 1 • Hillsborough, NJ 08844 • U.S.A.

Phone: (908) 359-6778 • FAX: (908) 359-1179

website: www.indofinechemical.com

e-mail: chemical@indofinechemical.com

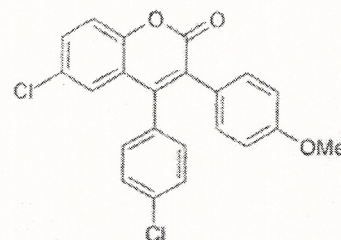
HPLC ANALYSIS

Catalog no.: 19-057

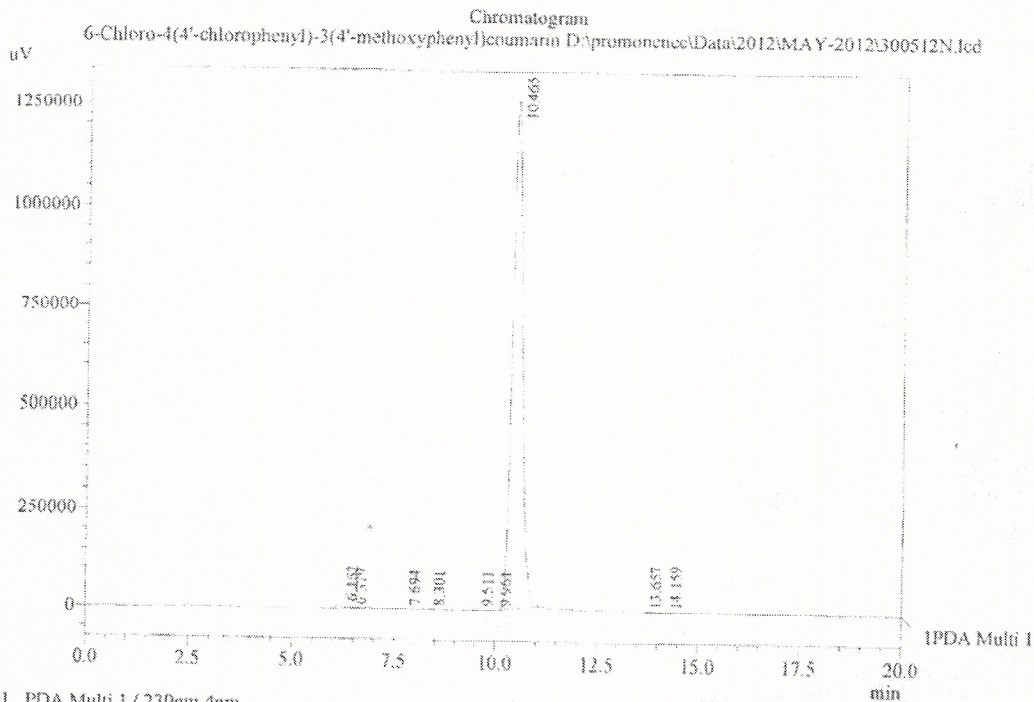
Product name: 6-Chloro-4(4'-chlorophenyl)-3(4'-methoxyphenyl)coumarin

Lot No.: 99002

Acquired by : Sanjeev
Sample Name : 6-Chloro-4(4'-chlorophenyl)-3(4'-methoxyphenyl)coumarin
Sample ID : Lot No.: 99002
Injection Volume : 20 uL
Data Filename : 300512N.lcd
Method Filename : Linear Isocratic.M.lcm



Column : LUNA C-18(2), (250mm x4.6mm 5.0µ)
Flow : 1.000 mL/min
Mobile Phase : A(20% of 0.05% TFA in water) B(80% of Acetonitrile)



I PDA Multi I / 230nm 4nm

PeakTable

Peak#	Name	Ret. Time	Area	Area %	Relative Retention Time
1	RT:6.162	6.162	96905	0.44	0.59
2	RT:6.379	6.379	13585	0.06	0.61
3	RT:7.694	7.694	10689	0.05	0.74
4	RT:8.301	8.301	7113	0.03	0.79
5	RT:9.511	9.511	7170	0.03	0.91
6	RT:9.961	9.961	4508	0.02	0.95
7	RT:10.465	10.465	21719882	99.26	1.00
8	RT:13.657	13.657	7529	0.03	1.31
9	RT:14.159	14.159	14491	0.07	1.35
Total			21881872	100.00	



INDOFINE Chemical Company, Inc.

121 Stryker Lane, Bldg. 30, Suite 1 • Hillsborough, NJ 08844 • U.S.A.

Phone: (908) 359-6778 • FAX: (908) 359-1179

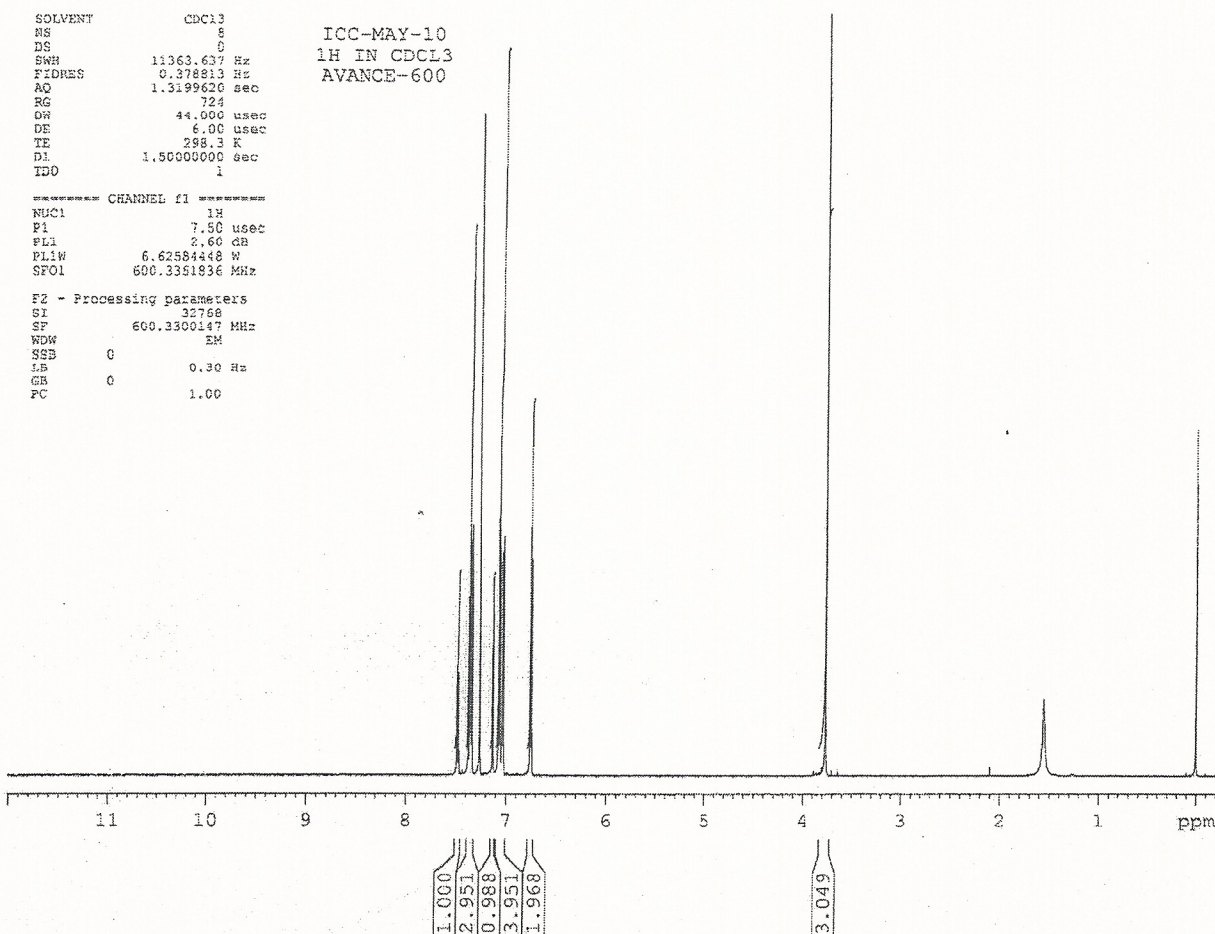
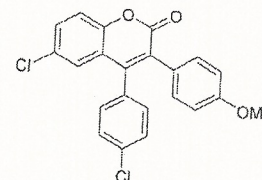
website: www.indofinechemical.com

e-mail: chemical@indofinechemical.com

Catalog no.: 19-057

Product name: 6-Chloro-4-(4'-chlorophenyl)-3-(4'-methoxyphenyl)coumarin

Lot No.: 99002





INDOFINE Chemical Company, Inc.

121 Stryker Lane, Bldg. 30, Suite 1 • Hillsborough, NJ 08844 • U.S.A.

Phone: (908) 359-6778 • FAX: (908) 359-1179

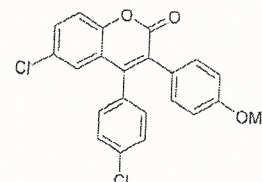
website: www.indofinechemical.com

e-mail: chemical@indofinechemical.com

Catalog no.: 19-057

Product name: 6-Chloro-4-(4'-chlorophenyl)-3-(4'-methoxyphenyl)coumarin

Lot No.: 99002



SOLVENT CDCl3
NS 8
DS 0
SMR 11363.637 Hz
FIDRES 0.376813 Hz
AQ 1.3199620 sec
RG 724
LW 44.000 usec
DE 6.00 usec
TE 298.3 K
D1 1.50000000 sec
TD0 1

ICC-MAY-10
1H IN CDCL3
AVANCE-600

***** CHANNEL f1 *****
NUC1 1H
P1 7.50 usec
P11 2.60 dB
PL1W 6.62584448 W
SFG1 600.3351836 MHz
SI 32768
SF 600.3300147 MHz
WDW EM
SKE 0
LB 0.30 Hz
GB 0
PC 1.00

